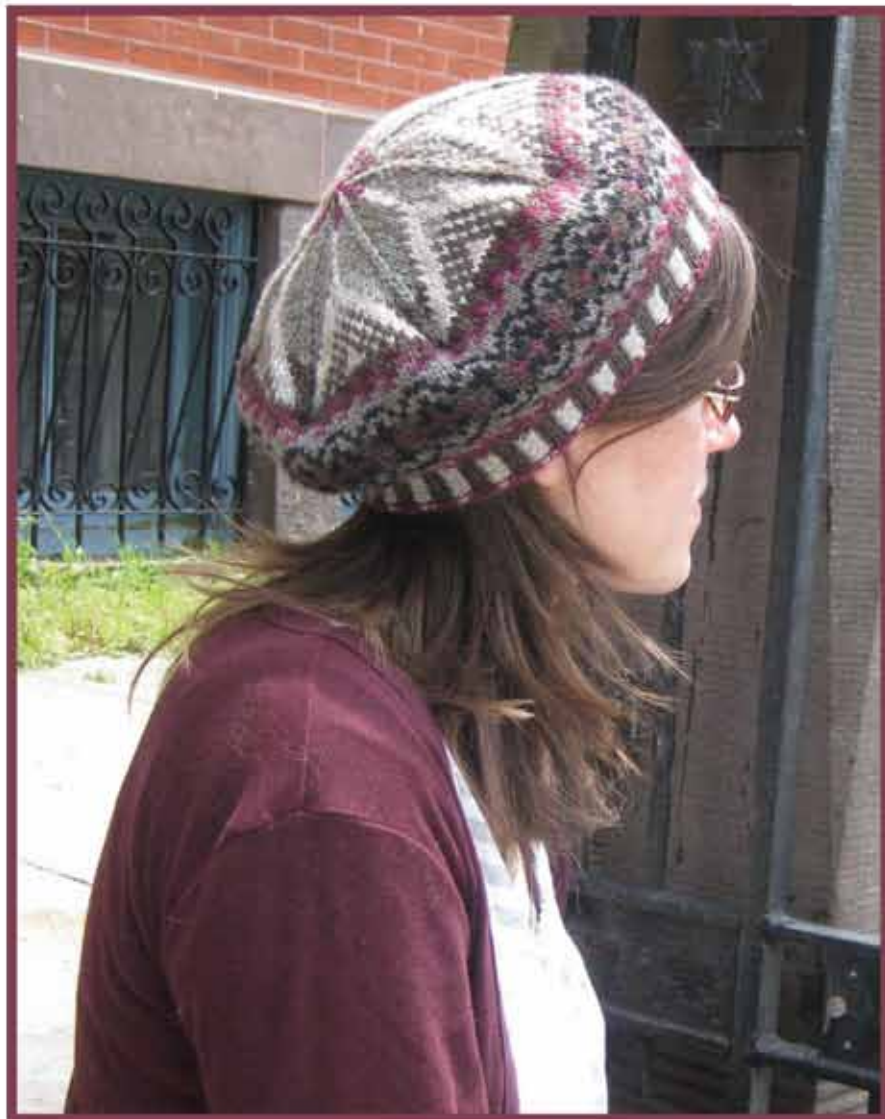


# Fair Isle Tam



Size: Women's medium (finished circumference approx. 20")

#### Materials:

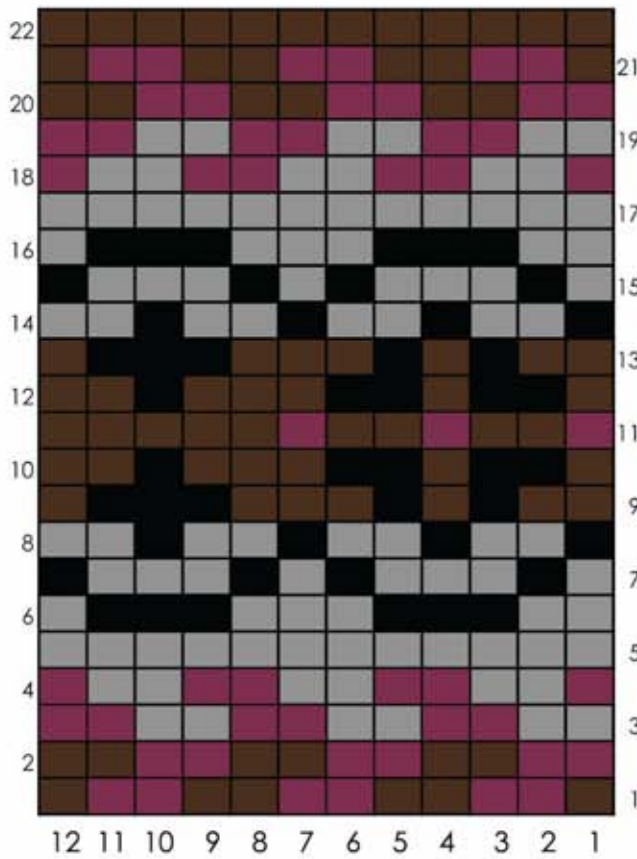
1 sk Manos Silk Blend (70% merino, 30% silk, 50 g, 150 yds) in each of the following colors:  
 300M Bing Cherry, 3019 Dove, 300G Coffee, 3044 Briar, 3008 Black  
 1 1/8" circular and dpn, US #4 or size to obtain gauge  
 stitch marker

Gauge: 24 sts = 4"/10 cm over fairisle pattern

Using circular needle and Bing Cherry, cast on 112 sts. Join, being careful not to twist, and work 8 rnds in corrugated rib as follows: \*Using Coffee, k2; using Dove, p2; rep from \* to end of rnd. Next rnd: Cut Dove. Using Coffee, (k1, inc in next st) around -- 168 sts. Work 1 rnd even. Rejoin Bing Cherry and work 22 rnds from Tam Body chart, joining in and breaking off colors as necessary. Work 24 rnds of Tam Decrease chart -- 7 sts remain after final rnd. Cut yarn, thread through rem sts, and fasten off. Weave in ends. To block, wet hat in cool water, then let dry over a 10"-diameter dinner plate.

# Tam Body Chart

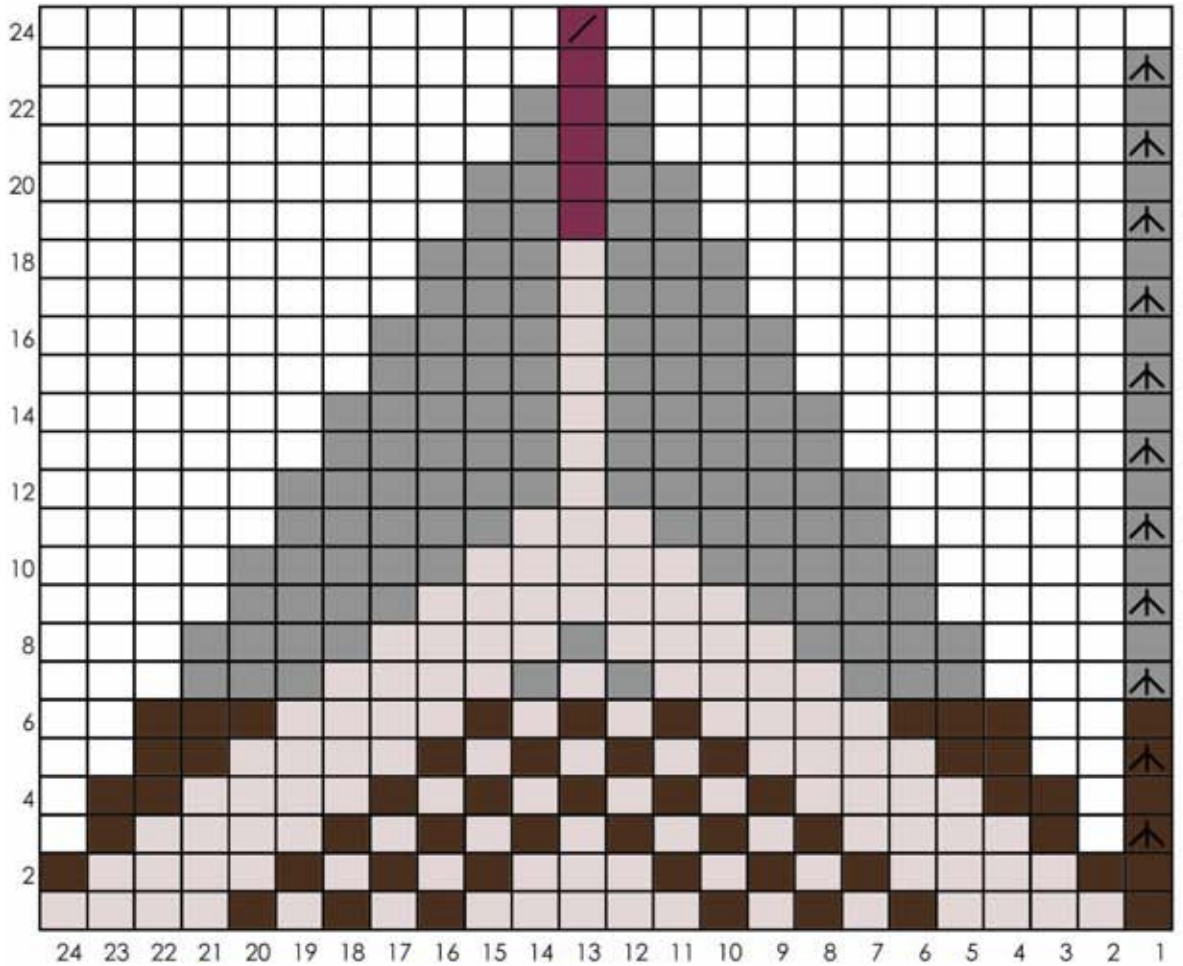
FREE PATTERN



### Key

- no stitch
- 300G Coffee
- 3019 Dove
- 3044 Briar
- 300M Bing Cherry
- 3008 Black
- K2tog
- ↑ slip 2 sts together knitwise, knit 1, pass 2 slipped sts over

# Tam Decrease Chart



Fairmount Fibers Presents *Fair Isle Tam*